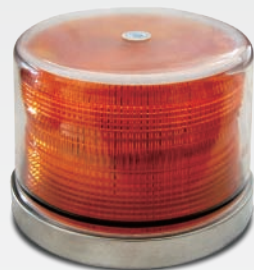
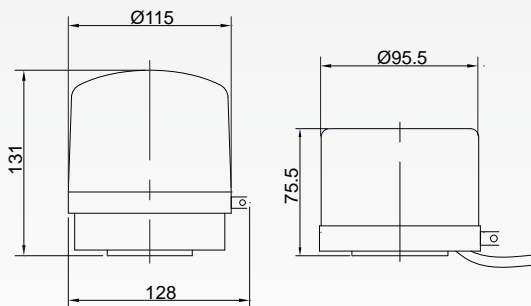




LS130



LS131



LS130

LS131

## LS130 / LS131 Flashing Warning Light

### Application

Used in the cabs of engineering machinery (travelling cranes, crawler cranes, truck cranes etc.), harbor crane (gantry crane, bridge crane etc.).

### Main Functions & Features

- LED flashing light ensure extreme long lifetime and low power consumption.
- Aluminum basement supply good ability of heat dissipation.
- Waterproof and Shockproof, corrosion and UV resistance.
- Ease of mount.
- Two different mounting way for selection, magnet or flange.

### Specification

| Description         | Parameter                       |
|---------------------|---------------------------------|
| Operating voltage   | DC12V / DC24V (optional)        |
| Power consumption   | 10W                             |
| Alarm               | Flashing (frequency: 7Hz)       |
| Light source        | LED                             |
| Color               | red, amber (optional)           |
| Ambient temperature | -20°C ~ +60°C                   |
| Humidity            | 10% ~ 95% (non – condensing)    |
| IP protection       | IP65                            |
| Material            | Basement: aluminum; Housing: PC |
| Weight              | 0.5kg                           |

