



LT901 Solar Warning Light

Application

Apply to construction machinery(travelling cranes, crawler crane, RTG cranes etc.), harbor machinery(bridge cranes, STS cranes)etc heavy machinery or port, quay such area request warning indicator.

Main Functions & Features

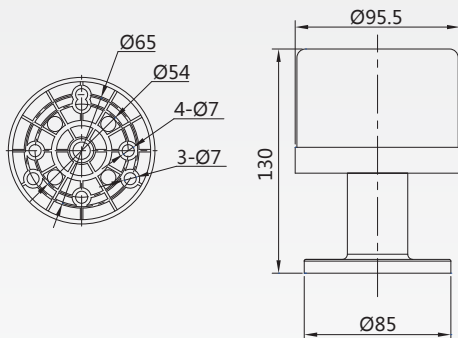
- Base material is Nylon and housing is PC, anti-ultraviolet
- Photoelectric automatic controlled
- Internal Ni-MH battery
- No RF, no electromagnetic interference, work stability
- Shockproof and corrosion resistance
- Three installing types for selection

Specification

Description	Parameter
Light source	LED
Color	Red
Working mode	Flash
Frequency	40±10 times / minute
Solar cell	0.3W monocrystalline silicon solar cell
Battery	1.2V/1.8AH (Maintenance-free) Ni-MH
Continuous operation	5 days
Peak intensity	5cd
Battery protection way	Bottom dormancy switch (see notice)
Ambient temperature	-40°C ~ +55°C
IP protection	IP65
Humidity	10% ~ 95% (no condensing)
Material	Base: Nylon; Housing: PC
Weight	0.4kg
Control type	Optically controlled



Flange Mounting



Surface mounting



Magnetic steel mounting